



www.slough.gov.uk
Slough
Borough Council

Public Health

Update on Ward Health Profiles, Slough Data Observatory and Slough Public Health website



Slough Health Scrutiny Panel - 10 September 2019

Contents

1. Overview of JSNA and Ward Health Profiles
2. Developing a library of information resources for Slough
3. Creating a data observatory
 - Instant Atlas
4. New Public Health website – a platform for information for all

JSNA and Ward Health Profiles

What are they?

- The **JSNA** provides an overview of the health and wellbeing of the Slough population and describes some of the Health and Wellbeing Board's key aims.
- **Ward Health Profiles** provide a place-focused overview of health and key social and environmental factors that are related to health eg employment, deprivation levels.

What do we use them for? To guide decision making and to inform policies, strategies and commissioning.

Why? To help reduce health inequalities and enable communities to live healthy lives.

Ward Health Profiles

Contents

1. Summary
2. Demographics
3. Deprivation, poverty and access to services
4. Economy and enterprise
5. Education
6. Health
7. Housing
8. Environment
9. Sources of data

Previously: Produced manually every 2 yrs

Future plan: Data Observatory allows creation of Ward Health Profiles with latest automatically-updated data

Accessibility Cookies Help

www.slough.gov.uk

Slough Borough Council

Resident Business About the Council

Councillors & committees Voting & elections Complaints & feedback Strategies, plans & policies Performance & spending More

Home Council information Joint Strategic Needs Assessment (JSNA) Slough ward profiles

Slough ward profiles

The 15 Slough ward profiles gives data on a range of topics and includes:

- demography
- deprivation
- poverty
- access to services
- economy
- enterprise
- education
- health and
- community safety.

Ward profiles

- Baylis and Stoke ward profile (PDF)
- Britwell and Northborough ward profile (PDF)
- Central ward profile (PDF)
- Chalvey ward profile (PDF)
- Cippenham Green ward profile (PDF)
- Cippenham Meadows ward profile (PDF)
- Colnbrook and Poyle ward profile (PDF)
- Elliman ward profile (PDF)
- Farnham ward profile (PDF)
- Foxborough ward profile (PDF)
- Haymill and Lynch Hill ward profile (PDF)
- Langley Kedermister ward profile (PDF)
- Langley St Mary's ward profile (PDF)
- Upton ward profile (PDF)
- Wexham Lea ward profile (PDF)

The data has been prepared by the Berkshire Shared Team using results from the 2011 Census as well as other data sources.

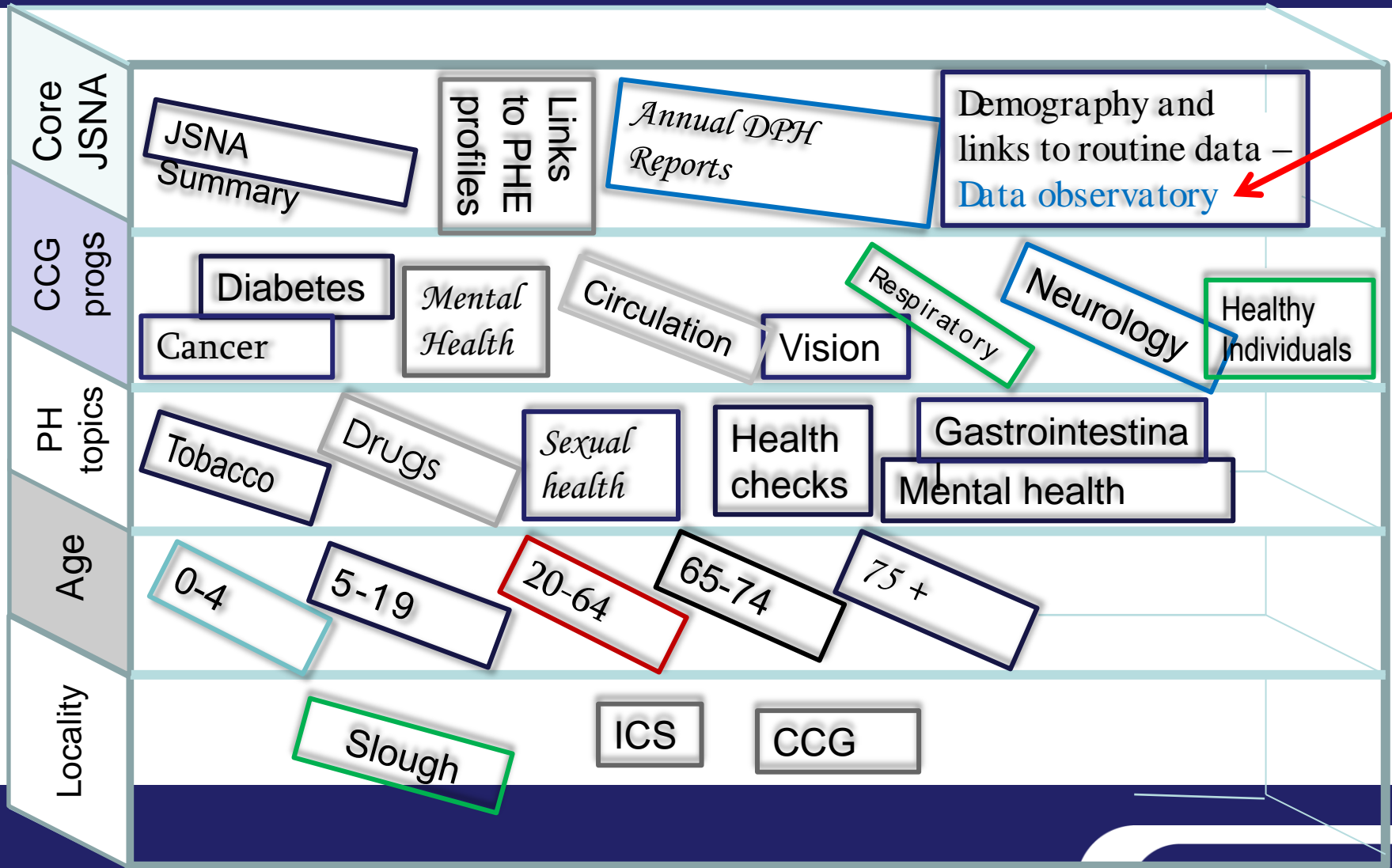
A TO Z OF SERVICES

sitemap contact news

translations help twitter kahuti feeds

Current Ward Health Profiles available at:
<https://www.slough.gov.uk/council/joint-strategic-needs-assessment/slough-ward-profiles.aspx>

Developing a library of information resources for decision making for Slough



Creating a Slough Data Observatory within a pan-Berkshire framework

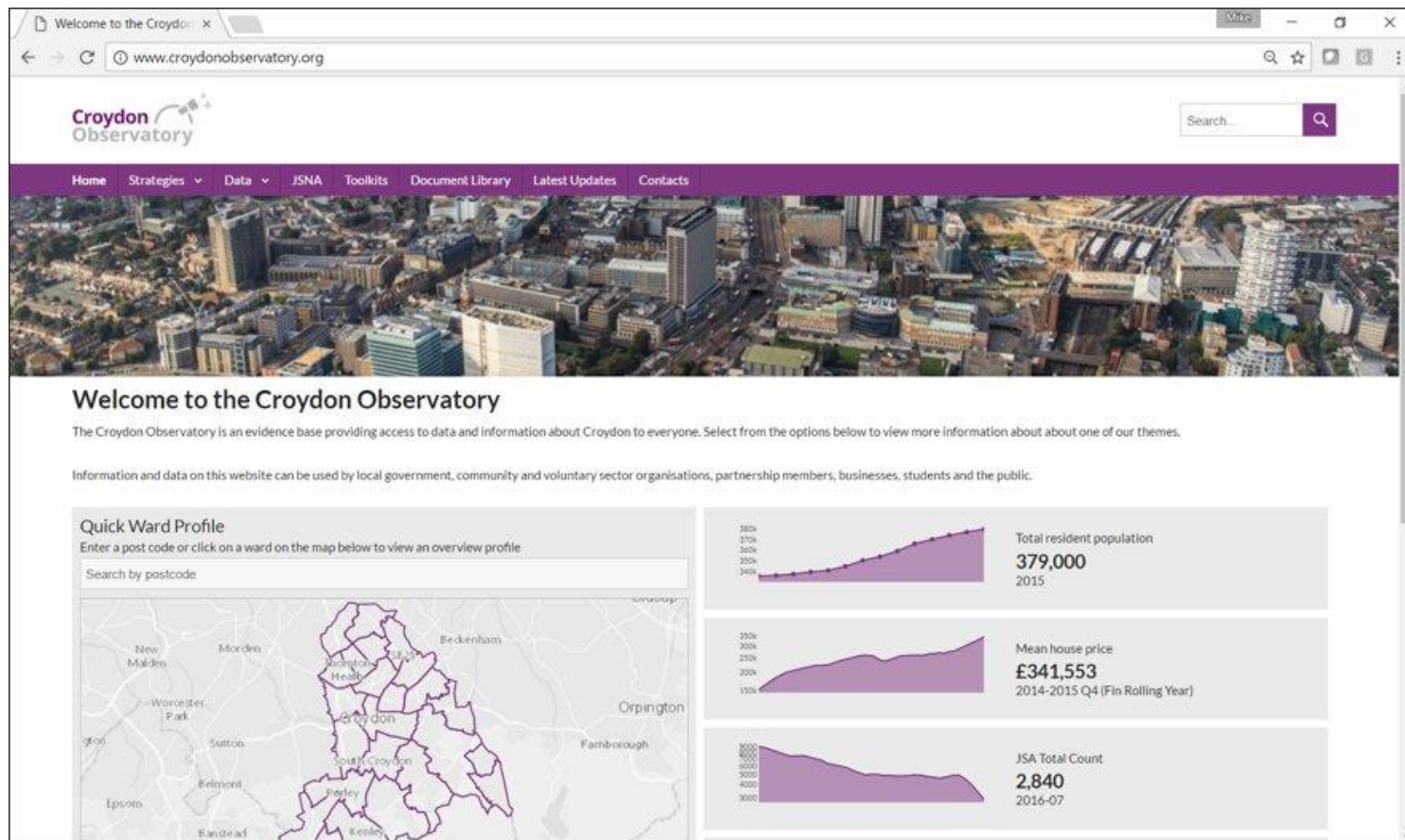
Instant Atlas – Provided by Geowise

A shared endeavour to produce, maintain and utilise a suite of tools to identify health and wellbeing priorities and guide decision making that reduces health inequalities and enable communities to live healthy lives – accessed via the [Berkshire Data Observatory](#)

Why?

- Met the needs of all Berkshire LAs
- Configurable flexible system
- Pages can be locked down
- Custom Reports can be made
- More indicators can be added (including locally collected)
- Can be integrated to existing websites

Instant Atlas – Example from Croydon



Progress update

Technical development – progress update

- Development of Berkshire Data Observatory using Instant Atlas ✓
- Geowise testing ✓
- Super-user and key partner review
 - Technical, Analytical, Strategic, Aesthetic
- Domain name ✓
- Go live launch
 - Key comms needed at this stage
- Wider comms and engagement
 - Options: User guides, Workshops & Presentations
- Further technical development based on needs

New Slough Public Health website: A platform to share information for all

The screenshot displays the Slough Public Health website. The top navigation bar includes the Slough Public Health logo, links for 'All services', 'Services for young people', 'Search local activities', 'Set your SMARTER goals', 'How are you?', 'Resources', 'Blog', and 'Speak to us'. A 'Select Language' dropdown menu is located in the top right corner, with a yellow arrow pointing to it from a text box. The main hero section features a background image of a person chopping a red pepper. Text on the hero section reads: 'SMALL CHANGES, BIG RESULTS', 'Making positive change needn't mean uprooting your entire life and routine.', and a button 'Start by choosing your goal'. Below this is a teal box titled 'OUR PLEDGE TO YOU' containing a commitment statement from Slough Borough Council. At the bottom, there is a grid of eight topic cards: 'Manage... MENTAL HEALTH & WELLBEING', 'I'd like to... EAT BETTER', 'I'd like to... MOVE MORE', 'I'd like to... LOSE WEIGHT', 'I'd like to... STOP SMOKING', 'I'd like to... DRINK LESS', 'I'd like to... PREVENT FALLS', and 'Manage... SEXUAL HEALTH'. A yellow box on the right side of the page, with a yellow arrow pointing to the 'Select Language' menu, contains the text 'Language translation capability'.

Public Health
Slough Borough Council

All services Services for young people Search local activities Set your SMARTER goals How are you? Resources Blog Speak to us

Select Language

Need some help?

SMALL CHANGES, BIG RESULTS

Making positive change needn't mean uprooting your entire life and routine.

Start by choosing your goal

OUR PLEDGE TO YOU

At Slough Borough Council, we are committed to helping our residents improve their health, well-being and fitness, and to be in the best shape possible. This website is packed with advice, resources, stories and links to educate, inspire and assist in reaching your goals, whatever they may be.

Manage... **MENTAL HEALTH & WELLBEING**

I'd like to... **EAT BETTER**

I'd like to... **MOVE MORE**

I'd like to... **LOSE WEIGHT**

I'd like to... **STOP SMOKING**

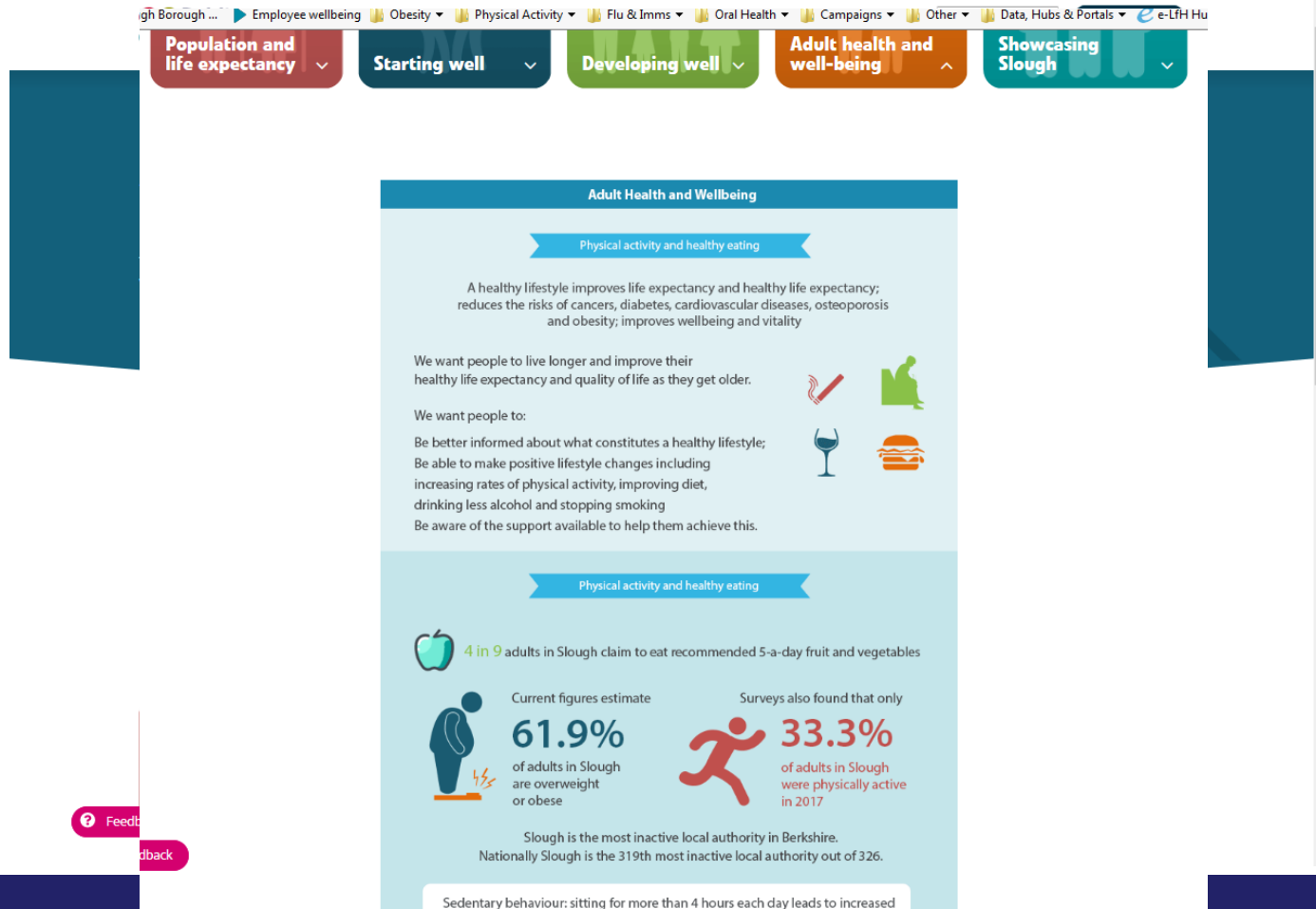
I'd like to... **DRINK LESS**

I'd like to... **PREVENT FALLS**

Manage... **SEXUAL HEALTH**

Language translation capability

Sharing existing data - JSNA



Sharing existing data – Other reports

[Select Language](#)
[Need some help?](#)

SLOUGH CCG LOCALITY PROFILE (2017)

Information about the health needs of the local population to support GP commissioners to develop their commissioning priorities.

[Download profile →](#)

DIRECTOR OF PUBLIC HEALTH ANNUAL REPORT (2018)

The 2018 report based on Creating the Right Environments for Health.

[Download report →](#)

PHE SLOUGH HEALTH PROFILE

This profile gives a picture of people's health in Slough.

[Download profile →](#)

CYP MENTAL HEALTH AND WELLBEING PROFILE

The 2017 Children and Young People profile for Mental Health and wellbeing in Slough

[Download profile →](#)

1. SUMMARY

Category	Indicator	Baylis and Stoke	Slough Average	Ward Range Worst	Local Authority Average	Ward Range Best
Deprivation & access	Indices of Multiple Deprivation Score - IMD (2015)	27.0	22.9	32.9		13.6
	% children in Poverty (2015)	20.8	19.5	25.7		9.8
	Barriers to Housing and Services Score - IMD domain (2015)	46.5	41.1	58.3		17.7
Economy & Enterprise	% Job Seekers Allowance Claimants (September 2017)	1.5	1.4	1.8		0.9
	% Income deprived households (2015)	18.7	15.1	8.5		21.3
Education	% of Good Level of Development at Age 5 (2013/14)	51.2	57.8	48.2		67.0
	% 5+ GCSEs A*-C (inc Maths and English) (2013/14)	55.0	59.2	48.3		72.1
Health	All Cause Mortality Rate <75, DGR per 100,000 (2012-16)	1001.1	1016.8	1354		728
	Life Expectancy - males (2011-15)	77.7	78	75.2		82.2
	Life Expectancy - females (2011-15)	81.8	82.9	79.6		87.2
	Emergency hospital admissions for all causes (SAR) 2011-16	134.6	125.0	151.9		104.6
	% low Birthweights <2500g (2011-15)	3.7	3.3	4.6		2.1

How to read the spine chart:
The shapes on the graph represent the value of the ward compared against the Local Authority average. If positioned to the right of the average line this suggests the ward is performing 'better' in a particular indicator, to the left suggests it is 'worse'. This does not necessarily mean higher or lower values, e.g. high GCSE attainment is 'better', whereas a high crime rate is 'worse'. The light grey rectangle represents the range between the 'best' and 'worst' wards in the local authority. The yellow circles represent values that are within the 75th and 25th percentile for that indicator, or where most values typically lie. The black triangles represent values that are better than the average, whilst the blue diamond shows values that are worse.

Ward Profile (summary page)

For any questions, please contact:

Liz Brutus – Service Lead - Public Health

Tim Howells – PH Programme Officer (Instant Atlas lead)

www.publichealthslough.co.uk

publichealthslough@slough.gov.uk

twitter - @SloughPH

Facebook - @SloughPublicHealth

Instagram - SloughPublicHealth